

# HCC1000Control

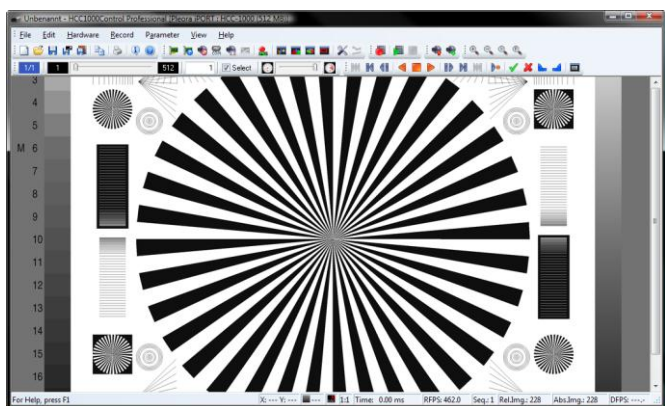
Extensive Windows Control Software  
for HCC-1000 & HCC-1200C cameras



## Features

- Support of all HCC-1000 & HCC-1200C cameras
- Support of single & multi sequences
- Adjustment of all camera parameters
- Support of software & hardware trigger
- Support for various grabbers like GigE & IEEE1394
- Histogram & statistic functions
- Single image and AVI sequence export supported

The HCC-1000 System is delivered with the **HCC1000Control** software: A comfortable recording software for Microsoft windows operating systems.



HCC1000Control gives the user complete control over all camera adjustments and the recorded sequences. The application is capable to grab images from various framegrabbers including GigE and IEEE1394.

In order to adjust the lens and the exposure/shutter settings a live preview display can be easily activated.

The software offers two different sequence recording modes:

- Single sequence
- Multi sequence

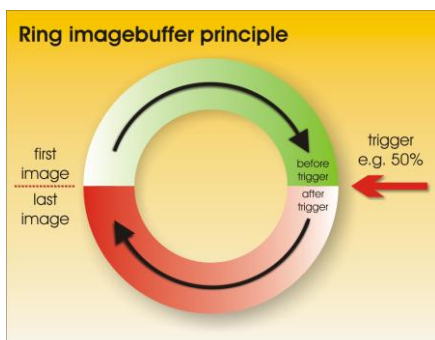
The single sequence mode is used in order to record very quickly a predefined sequence.

In multi sequence mode the user can define multiple sequences (each with different parameters if required). These sequences are processed one after another.

Every sequence is defined by the following parameters:

- Number of images
- Exposure/Shutter time
- Record delay (Recording speed)
- Start image within the image buffer of the camera
- Trigger mode
- Trigger moment

A sequence record can be started either by mouse click



or by a trigger impulse at the camera hardware. If the hardware trigger method is used, the user can also adjust the trigger moment in percent. This parameter defines how many

images within the cameras ring buffer are recorded before the trigger impulse and how many images are recorded after the pulse.

After recording the images are transferred from the camera to the PC for viewing and analyzing. The user can play the sequences, adjust brightness, contrast and gamma parameters and mark unwanted images.

Afterwards these sequences can be stored as Bitmap or TIF image files with an additional Access® data base file for the sequences information. Furthermore the sequences can be exported into AVI format.

HCC1000Control also supports a sequence upload & download feature: The user can prepare a camera for record by uploading all parameters for the next sequence. Afterwards the HCC-1000 camera can be disconnected from the PC in order to record the images independently.

After recording the images the camera can be reconnected to the PC again and the HCC1000Control software can access all previously recorded images.

## System Requirements

### PC / Notebook:

- Microsoft® Windows 2000, Microsoft® Windows XP or Microsoft® Windows Vista®
- Intel® Pentium® III 700MHz (Intel® Pentium® 4 1GHz recommended)
- 128MB RAM (512MB recommended)
- 100MB available hard disk space for installation
- Hard disk space for sequence record according to each image size & format
- Graphic card with 64MB RAM (128MB recommended)
- CD- / DVD-drive

### Camera:

- Allied Vision Technologies GmbH high speed digital camera

### Framegrabber:

- Pleora iPORT GigE with Gigabit Ethernet capable network card
- IEEE1394a card, OHCI compatible (TI chip set recommended)
- Matrix Vision pciIMAGE-SDIG (RS644 / LVDS)
- Matrix Vision mvTITAN-DIG (RS644 / LVDS)
- Matrix Vision mvTITAN-CL (Camera Link)
- Matrix Vision mvGAMMA-CL (Camera Link)